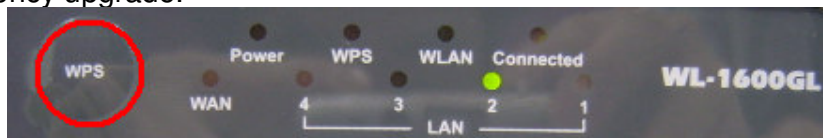


How to update WL1600GL to third party firmware

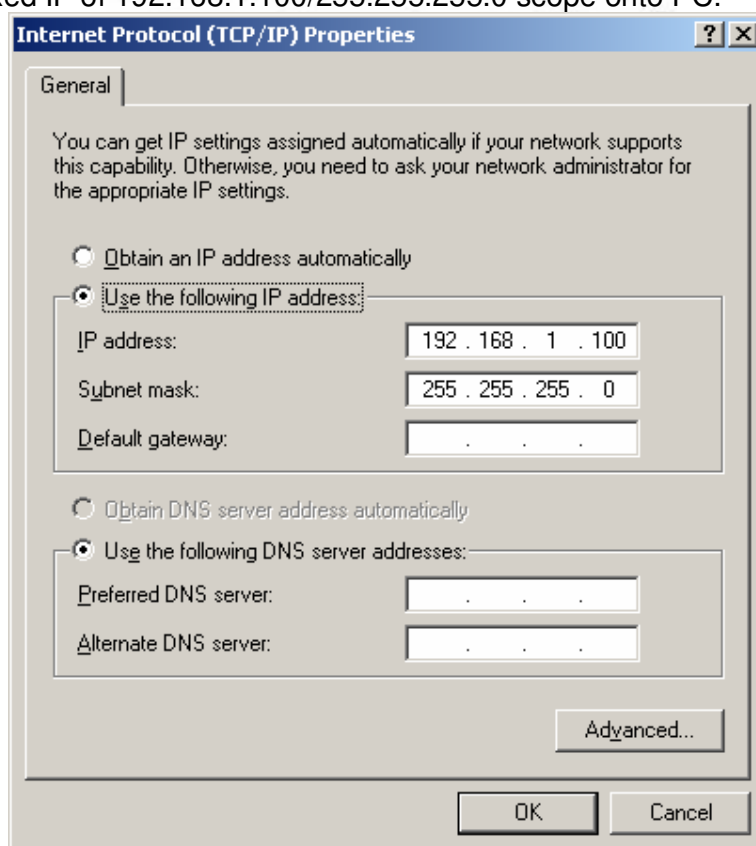
Operate on the Device:

1. Connect the Ethernet cable exactly to LAN port of WL-1600GL.
2. Connect the other end of cable *DIRECTLY* to the PC.
3. Please make sure the power jack is **NOT** plug in
4. Please push and hold the WPS Button, then plug-in the power to the router. Hold the WPS button until all LED are off except the LAN LED. Your router is now ready for emergency upgrade.

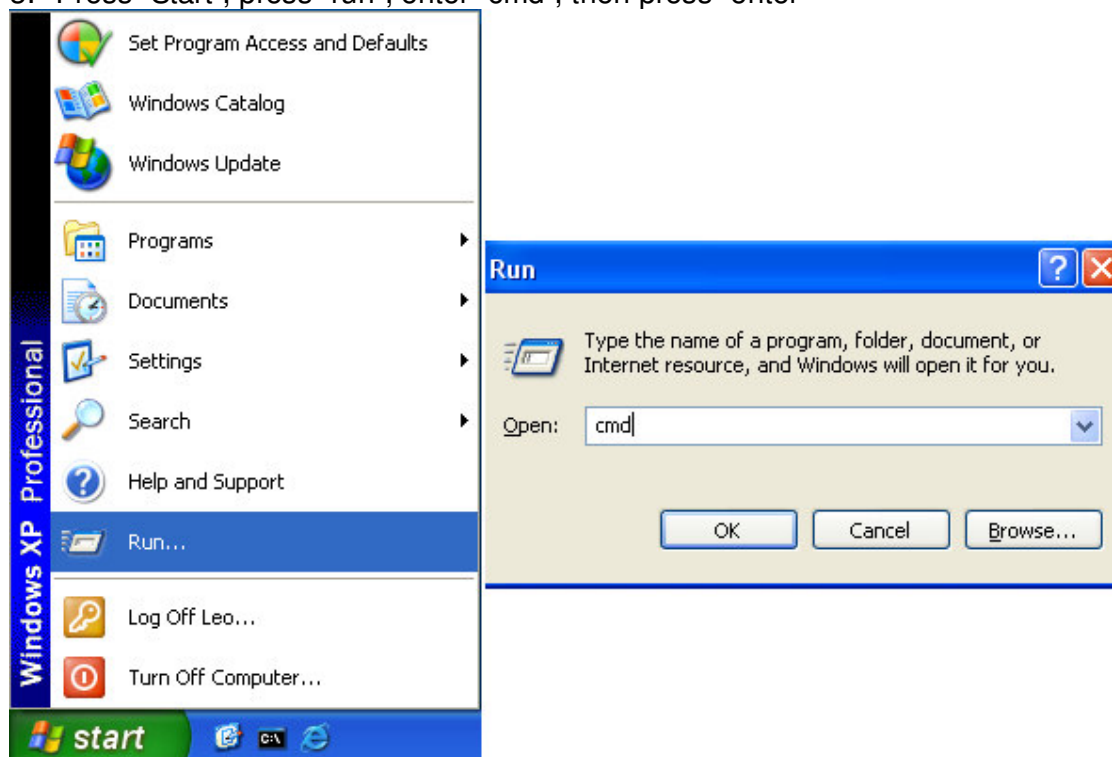


Operate on windows system:

1. Right click on "Network" -> "Properties" -> "Internet protocol (TCP/IP) properties" on computer.
2. Assign fixed IP of 192.168.1.100/255.255.255.0 scope onto PC.



3. Press "Start", press "run", enter "cmd", then press "enter"



4. Ping the WL-1600GL ftp 192.168.1.1 , if no reply please retry "Operate on the Device"

```
Microsoft Windows XP [Version 5.1.2600]
(C) Copyright 1985-2001 Microsoft Corp.

C:\Documents and Settings\Leo>ping 192.168.1.1

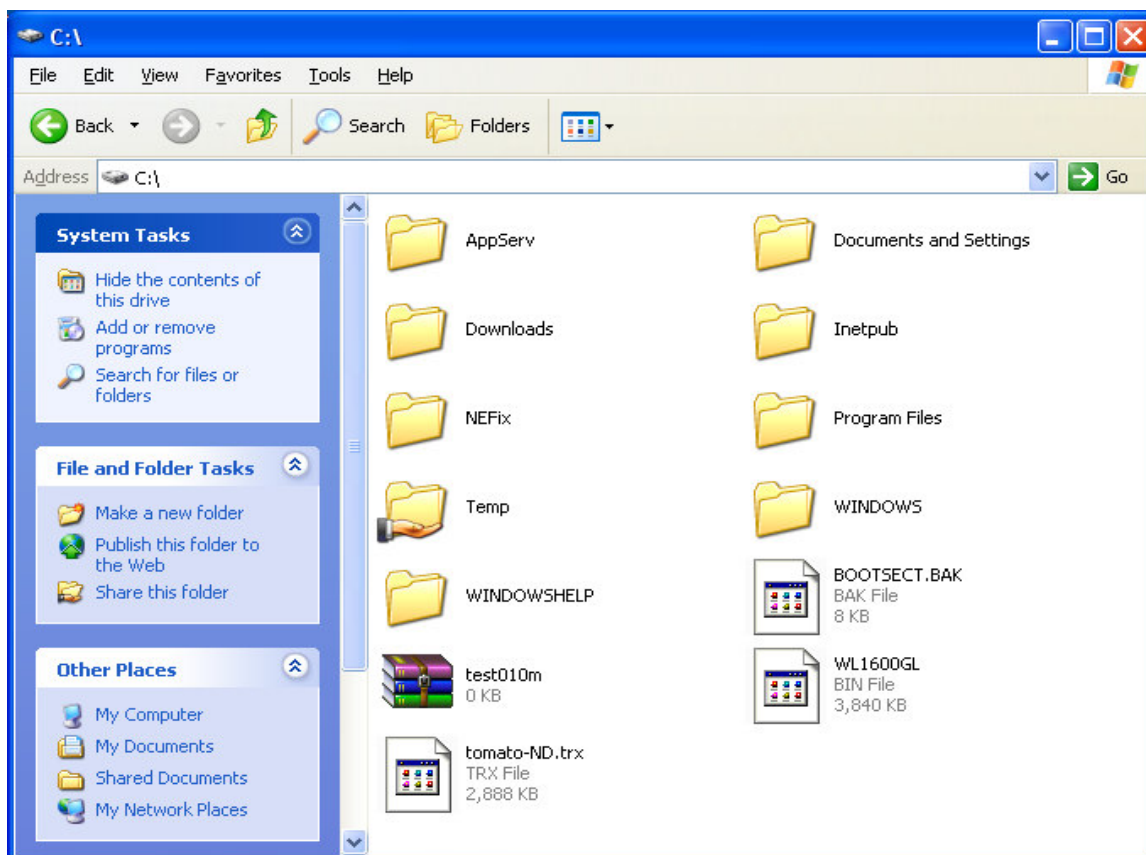
Pinging 192.168.1.1 with 32 bytes of data:

Reply from 192.168.1.1: bytes=32 time=5ms TTL=100
Reply from 192.168.1.1: bytes=32 time=1ms TTL=100
Reply from 192.168.1.1: bytes=32 time=1ms TTL=100
Reply from 192.168.1.1: bytes=32 time=1ms TTL=100

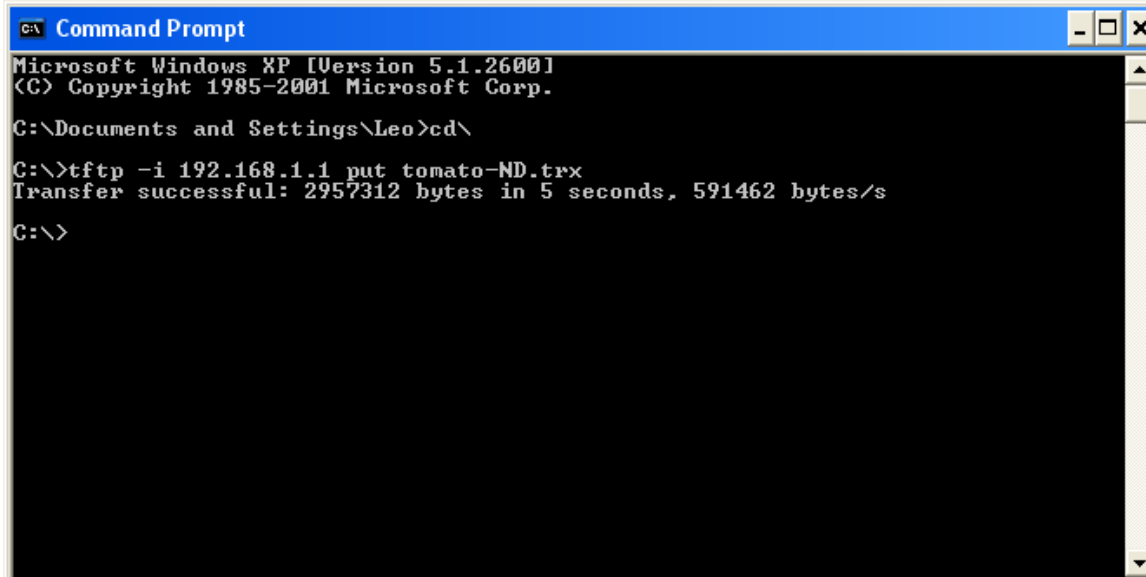
Ping statistics for 192.168.1.1:
    Packets: Sent = 4, Received = 4, Lost = 0 (0% loss),
    Approximate round trip times in milli-seconds:
        Minimum = 1ms, Maximum = 5ms, Average = 2ms

C:\Documents and Settings\Leo>
```

5. Copy the tomato-ND.trx to C:\



6. Type "cd\" into `C:\>`, type "tftp -i 192.168.1.1 put tomato-ND.trx", then press Enter



When return "Transfer successful: ** bytes in * seconds" your device receive data through TFTP client, please wait a few minutes. Device will update flash and then reboot itself.

7. WL-1600GL will replace into third party firmware

The screenshot shows the Tomato router status page in Microsoft Internet Explorer. The browser window title is "[tomato] Status: Overview - Microsoft Internet Explorer". The address bar shows "http://192.168.1.1/". The page has a red header with "Tomato Version 1.22". On the left is a navigation menu with links: Status, Overview, Device List, Logs, Bandwidth, Real-Time, Last 24 Hours, Daily, Weekly, Monthly, Tools, Ping, Trace, Wireless Survey, WOL, Basic, Advanced, Port Forwarding, QoS, Access Restriction, Administration, About, and Reboot... The main content area is titled "System" and contains a table of system information. Below this is a "WAN" section with network details. At the bottom of the WAN section are "Renew" and "Release" buttons.

System	
Name	tomato
Model	Broadcom 5/0x048e/8/0x11/0x20750
Time	Not Available
Uptime	0 days, 00:07:03
CPU Load (1 / 5 / 15 mins)	0.00 / 0.00 / 0.00
Total / Free Memory	14.14 MB / 5,760.00 KB (39.77%)

WAN	
MAC Address	00:90:4C:C0:00:09
Connection Type	DHCP
IP Address	0.0.0.0
Subnet Mask	0.0.0.0
Gateway	0.0.0.0
DNS	
MTU	1500
Status	Renewing...
Connection Uptime	-
Remaining Lease Time	0 days, 00:00:00